



COMMITTENTE:

Provincia di Modena

Viale Martiri della Libertà, 34 - 41121 Modena

Tel. 059.209.111

PEC: provinciadimodena@cert.provincia.modena.it

C.F. 01375710363 - P.IVA 01375710363

CICLOVIA DEL SOLE

VERONA - FIRENZE
TRONCHI 7 E 9
TRATTI IN PROVINCIA DI MODENA



PROGETTO DEFINITIVO - ESECUTIVO

Tavole sinottiche comparative di
demolizioni/costruzioni: Concordia sulla
Secchia

PROT. -	SCALA 1:500	FORMATO A3
CODICE PAE 5-1	N. REV A	DATA 08/2023

Progettisti:

Arch. Irene Esposito
Arch. Enrico Guaitoli Panini

Il Responsabile Unico del Procedimento:

Ing. Daniele Gaudio

Collaboratori:

Arch. Alberto Coppi
Arch. Michela Gessani
Dott. Paes. Sara Martignoni
Arch. Eleonora Vaccari

Supporto al Responsabile Unico del Procedimento:

Consulenti:

Geol. Gianluca Vaccari
Ing. Marco Monaci
Ing. Michele Baratta

**FAHRE
ASSOCIATI**

Enrico Guaitoli Panini e Irene Esposito architetti associati






Viale Marcello Finzi, 597 - 41122 - Modena

tel. 328/7421242 - 335/6058479

sito: www.fahreassociati.it mail: info@fahreassociati.it

P.IVA e C.F. 03224820369

TAVOLA SINOTTICA

-  COSTRUZIONI - PAVIMENTAZIONI E AIUOLE
-  COSTRUZIONI - CORDOLI
-  COSTRUZIONI - SEGNALETICA VERTICALE
-  COSTRUZIONI - PADIGLIONE
-  DEMOLIZIONI - PAVIMENTAZIONI
-  DEMOLIZIONI - SEGNALETICA VERTICALE
-  RIPAVIMENTAZIONE CICLABILE ESISTENTE

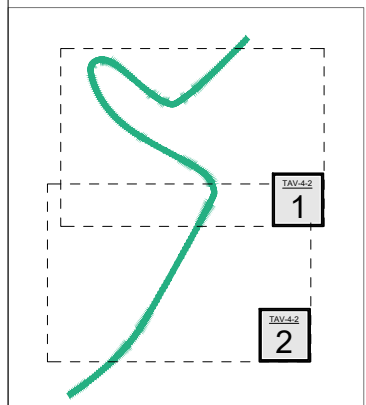
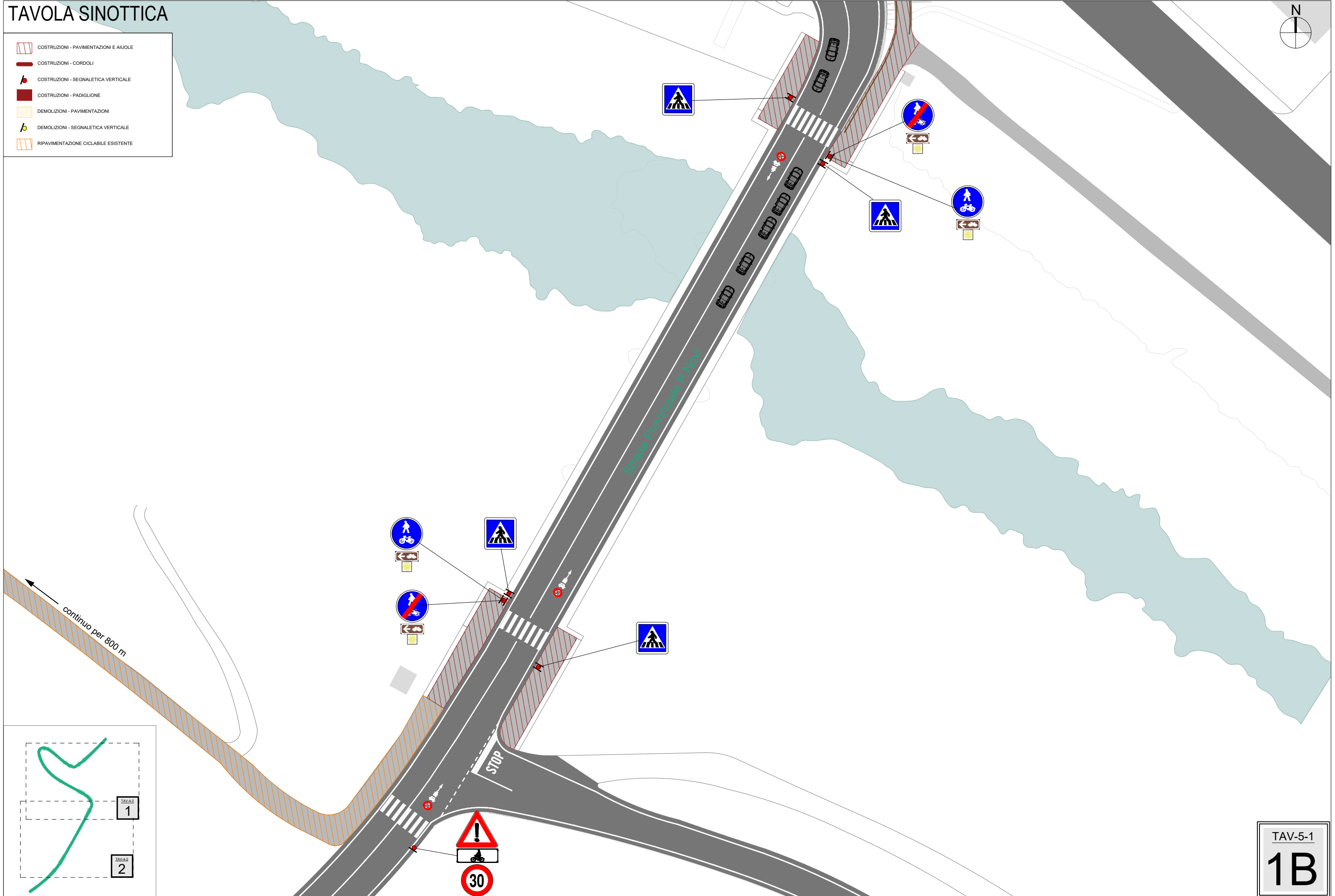
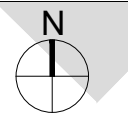







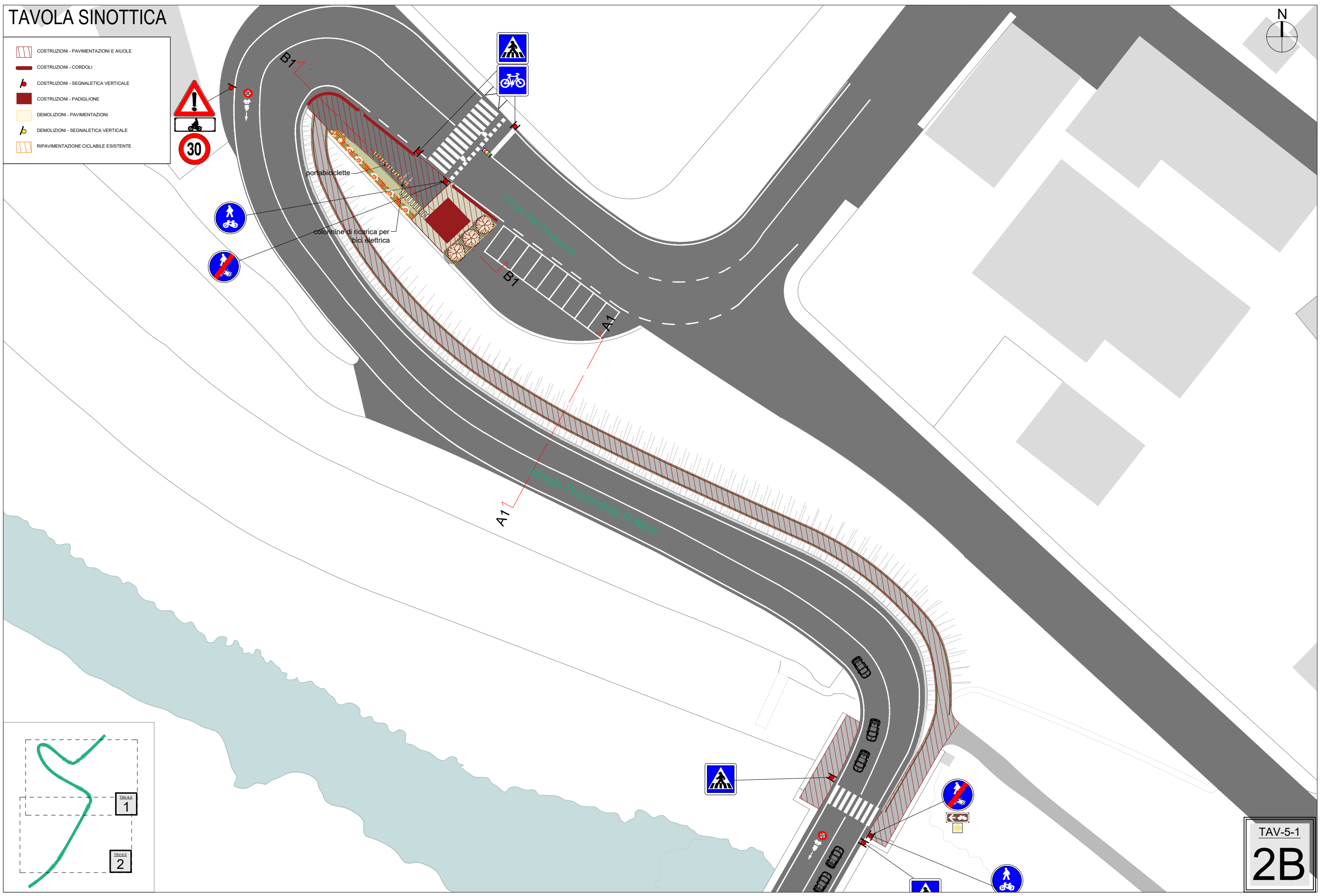
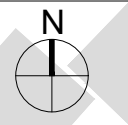


TAVOLA SINOTTICA

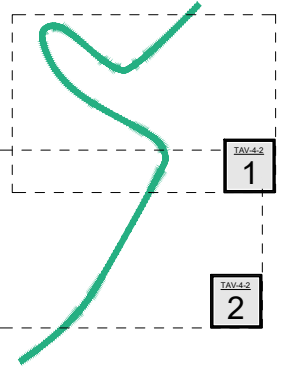
-  COSTRUZIONI - PAVIMENTAZIONI E AIUOLE
-  COSTRUZIONI - CORDOLI
-  COSTRUZIONI - SEGNALETICA VERTICALE
-  COSTRUZIONI - PADIGLIONE
-  DEMOLIZIONI - PAVIMENTAZIONI
-  DEMOLIZIONI - SEGNALETICA VERTICALE
-  RIPAVIMENTAZIONE CICLABILE ESISTENTE



portabiciclette

colonnine di ricarica per
bici elettrica

A1
Strada Provinciale P. Novi



TAV-5-1
2B